

# RESEARCH OPPORTUNITIES IN THE SPRINGER-LU LAB

The Springer-Lu Lab is seeking highly motivated, self-sufficient postdoctoral fellows to drive innovative research projects forward in the lab.

Candidates must be:

- Scientifically curious
- Intellectually committed
- Capable of working independently


Strong communication and writing skills are essential, and postdoctoral fellows are expected to apply for fellowship grants.

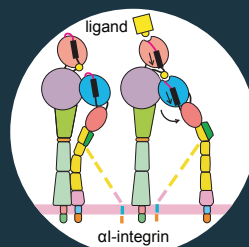
**TO APPLY:** Please submit a cover letter in the body of an email and CV and references as attachments to [springer\\_jobs@crystal.harvard.edu](mailto:springer_jobs@crystal.harvard.edu) with "PD-061516" in the subject field. Only applications sent to this email address will be reviewed.

**SALARY:** First year fellow range: \$44,000–\$50,000. Upper range is dependent on experience, and contingent on developing a strong postdoctoral fellowship proposal prior to starting in the lab.

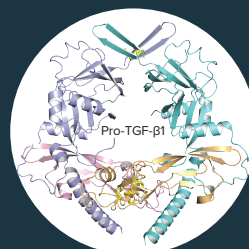
Timothy A. Springer, Ph.D.  
Latham Family Professor  
Center for Life Sciences  
3 Blackfan Circle  
Boston, MA 02115

 **Boston Children's Hospital**  
Program in Cellular and Molecular Medicine

 **HARVARD**  
MEDICAL SCHOOL  
Dept. of Biological Chemistry & Molecular Pharmacology



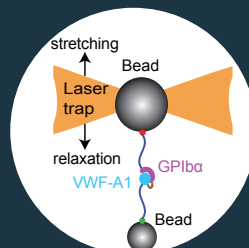
**Structural and Cell Biology of Integrins and Integrin Activation**



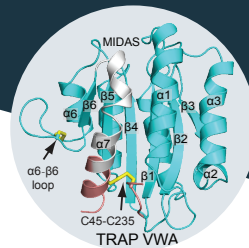
**Structural Biology of TGF- $\beta$  and BMP Family Activation**



**In vivo Knockout Mouse Work in Immuno-oncology with Knockouts Affecting TGF- $\beta$  Activation**



**Single Molecule Studies of Mechanobiology, Structure, and Function of von Willebrand Factor (VWF)**



**Structural Biology of Malaria Vaccine Targets**

More details at:  
<http://timothyspringer.org/research>  
Flyer file available for download at:  
<http://timothyspringer.org/research-opportunities>